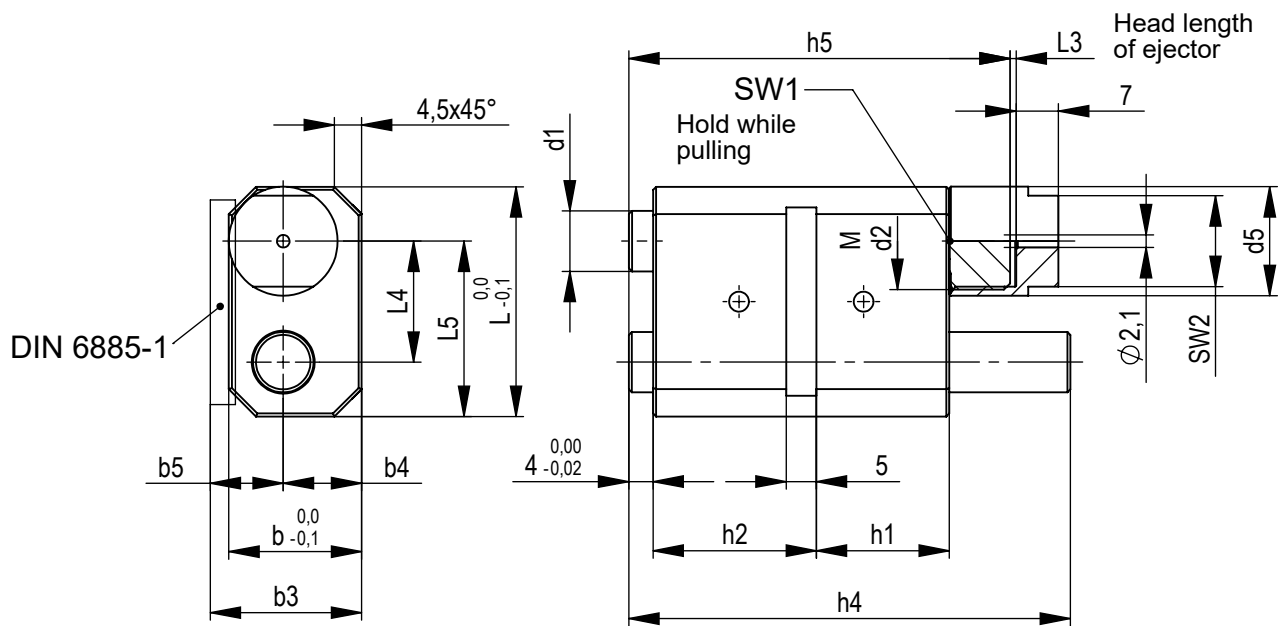
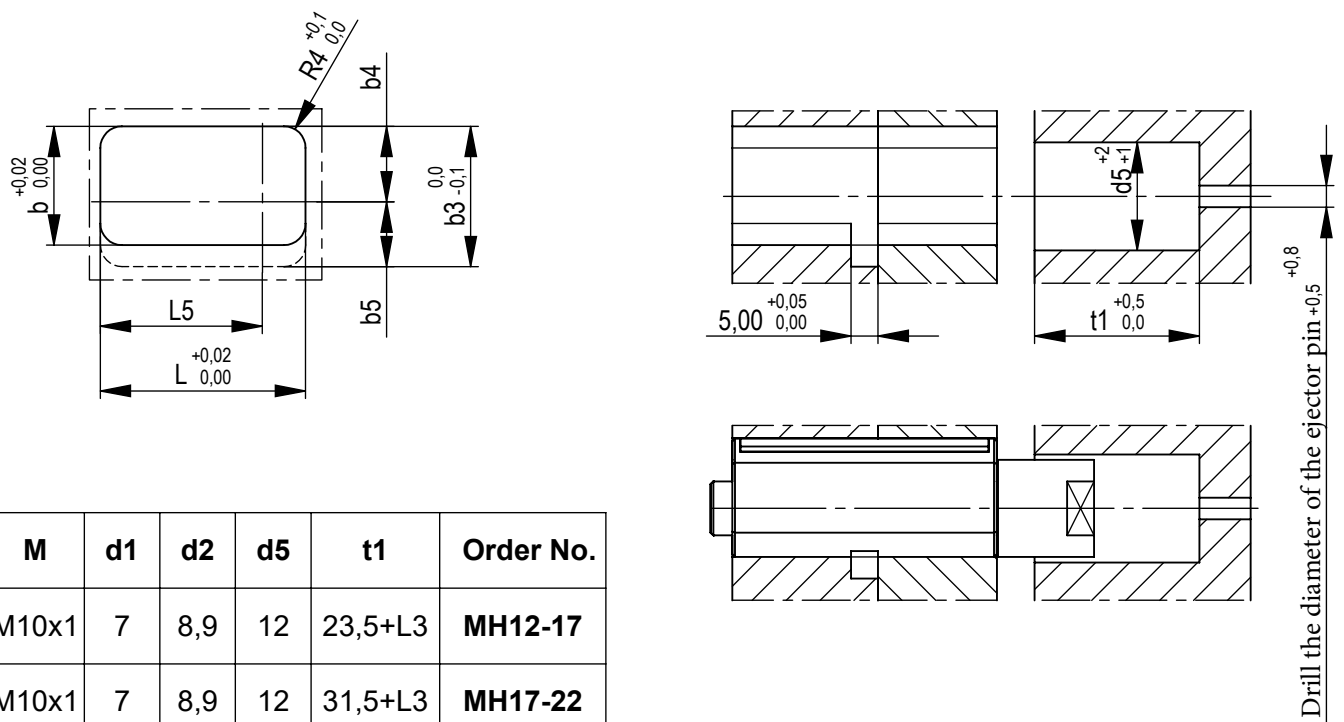


# Multi-stroke accelerator

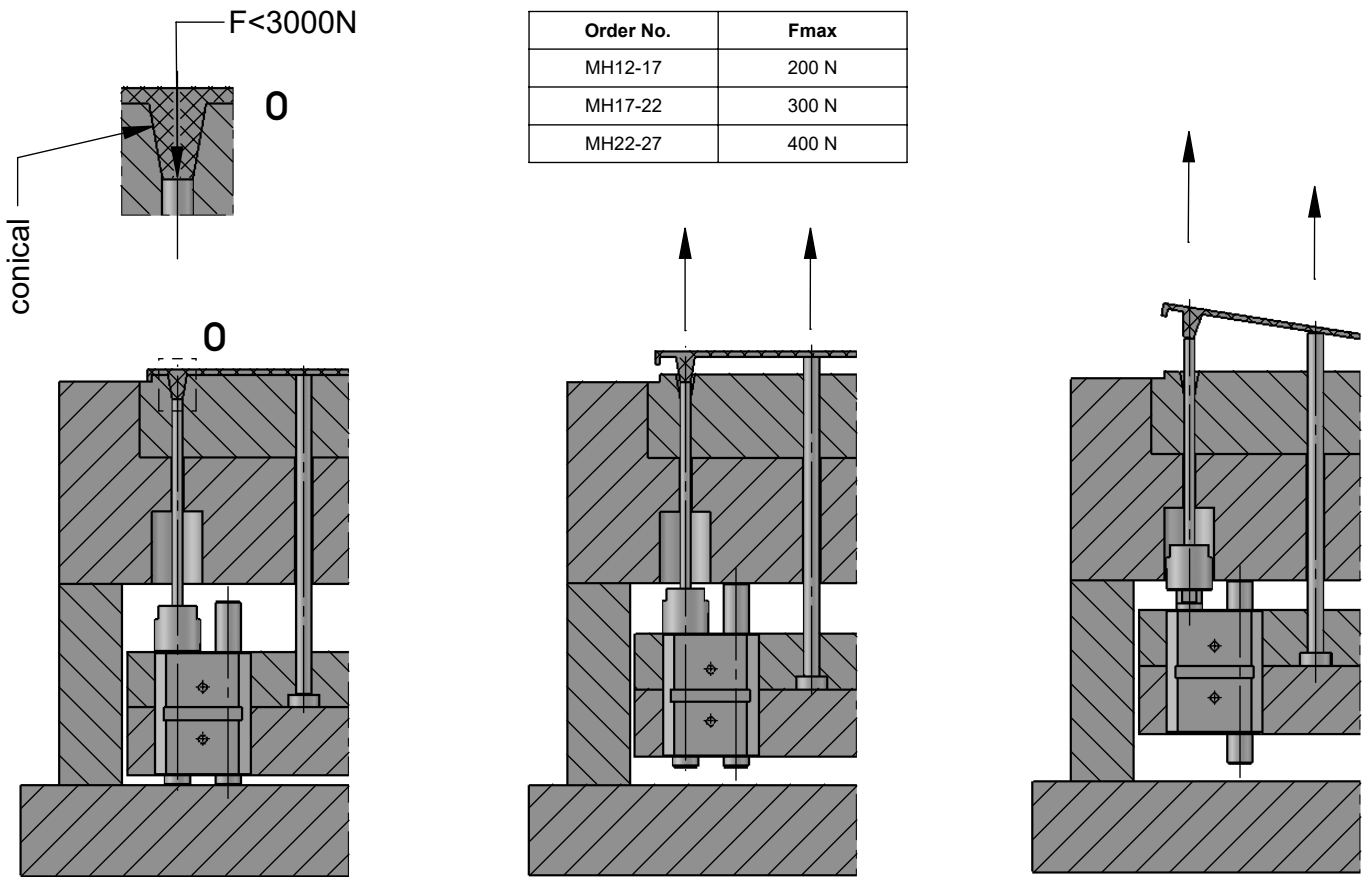


SW1	SW2	b	b3	b4	b5	L	L3 max	L4	L5	h5	h4	Hub	h2	h1	Order No.
6	10	16	20	10	10	25	5	14	19,5	43	39	6	17	12	MH12-17
6	10	16	20	10	10	25	5	14	19,5	53	57	14	22	17	MH17-22
9	15	22	25	13	13	38	5	20	29	63	73	20	27	22	MH22-27



Drill the diameter of the ejector pin +0.5

Multi-stroke accelerator



The rigid connection of several multi-stroke accelerators with stripping or molding plates is to be avoided.