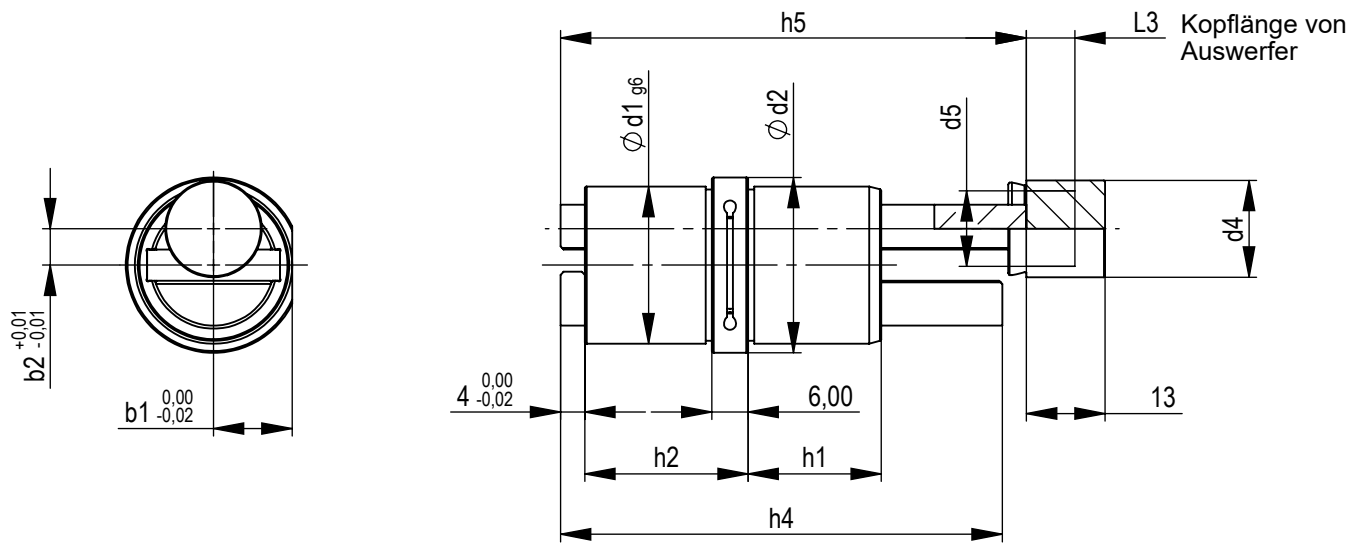
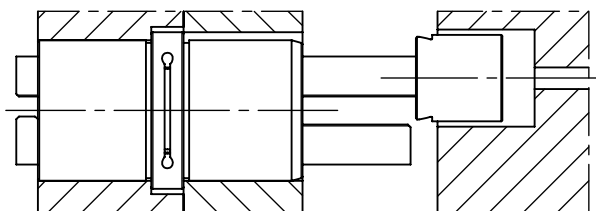
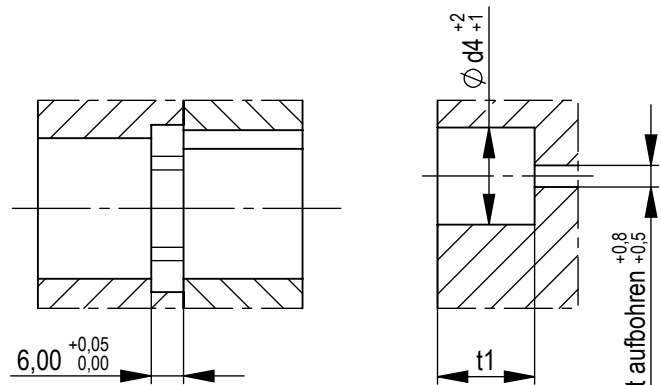
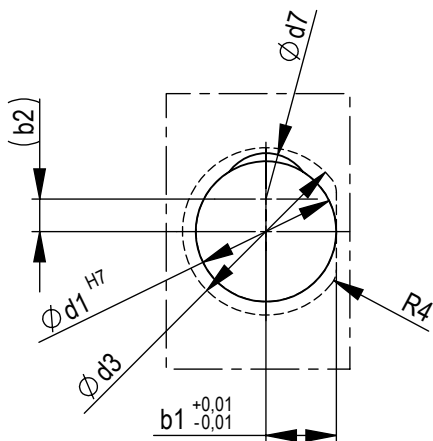


Multihubbeschleuniger einfahrend gehärtet



1.2083 ca. 53 HRC

d1	d2	d4	b1	b2	h5	h4	Hub	h2	h1	Best.-Nr.
26	29	16	13	6	77	73	20	27	22	<b>MH-EFG22-27</b>



$\varnothing$  Durchmesser von Auswerferstift aufbohren +0.8  
+0.5

d3	d5 max	L3 max	d7	t1	Best.-Nr.
31	12,5	8	17	18	<b>MH-EFG22-27</b>

Multihubbeschleuniger einfahrend gehärtet

