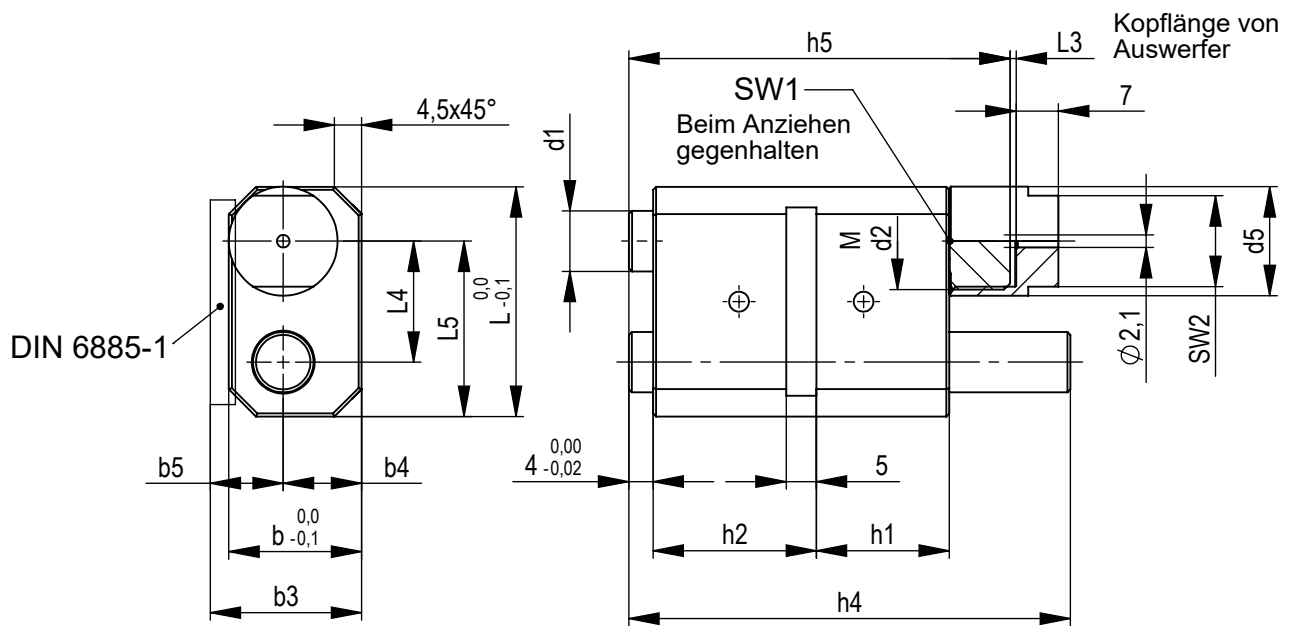
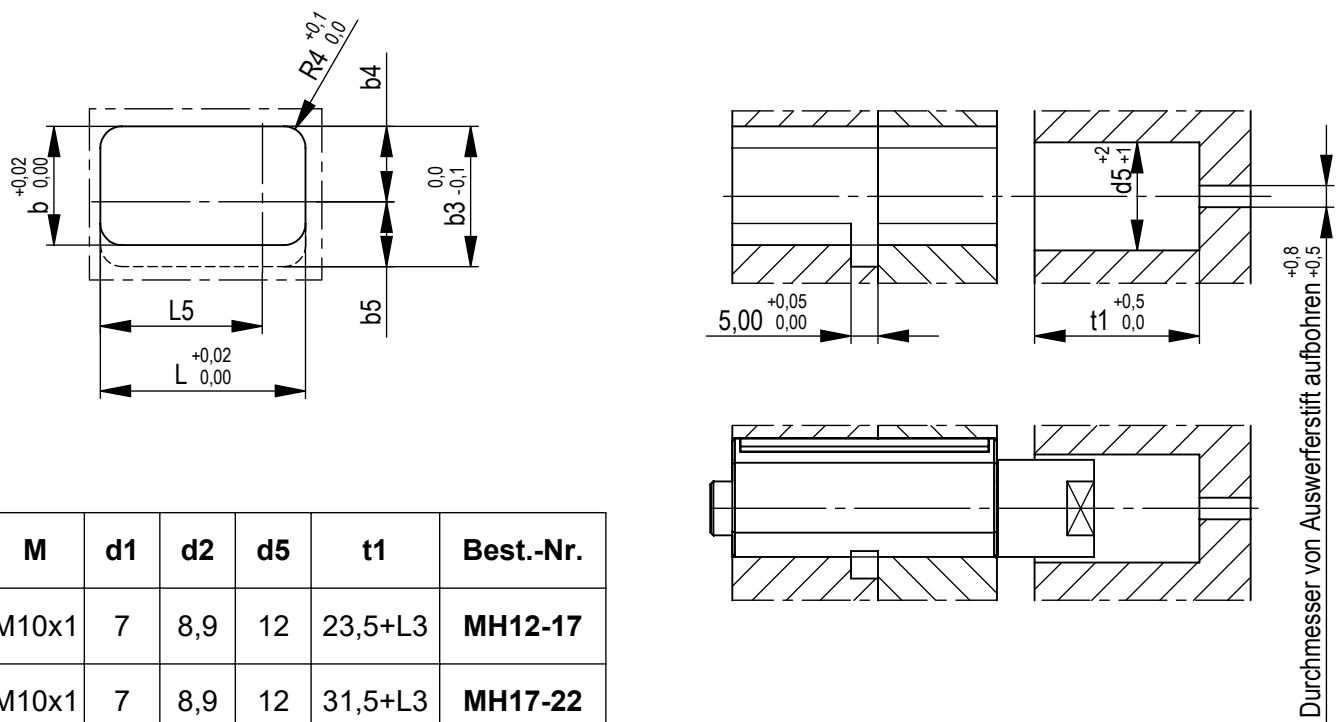


Multihubbeschleuniger

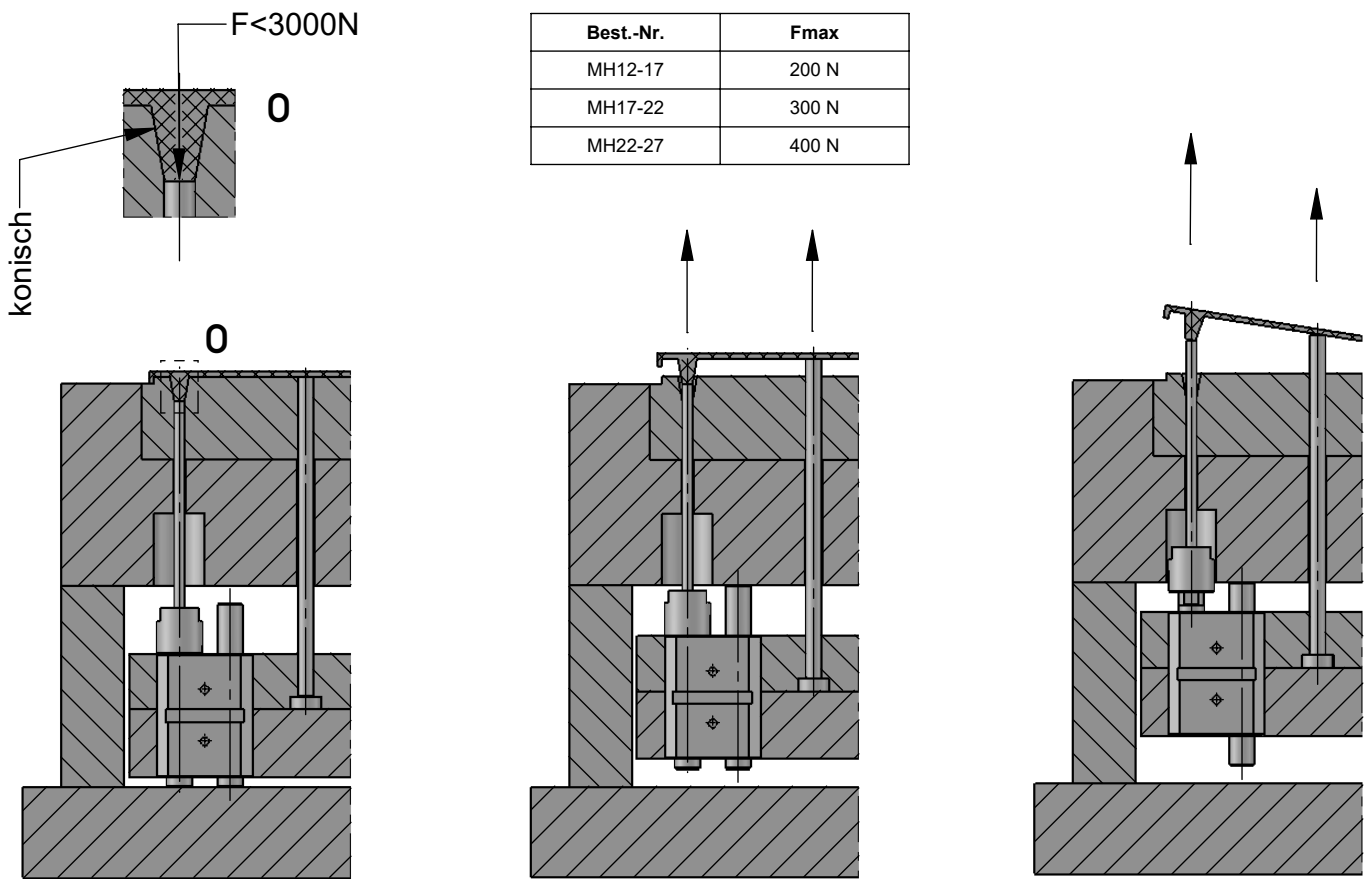


SW1	SW2	b	b3	b4	b5	L	L3 max	L4	L5	h5	h4	Hub	h2	h1	Best.-Nr.
6	10	16	20	10	10	25	5	14	19,5	43	39	6	17	12	MH12-17
6	10	16	20	10	10	25	5	14	19,5	53	57	14	22	17	MH17-22
9	15	22	25	13	13	38	5	20	29	63	73	20	27	22	MH22-27



M	d1	d2	d5	t1	Best.-Nr.
M10x1	7	8,9	12	23,5+L3	MH12-17
M10x1	7	8,9	12	31,5+L3	MH17-22
M16x1	10	14,9	18	37,5+L3	MH22-27

Multihubbeschleuniger



Best.-Nr.	Fmax
MH12-17	200 N
MH17-22	300 N
MH22-27	400 N

Das starre Verbinden mehrerer Multihubverlängerer mit Abstreif- bzw. Formplatten ist zu vermeiden.