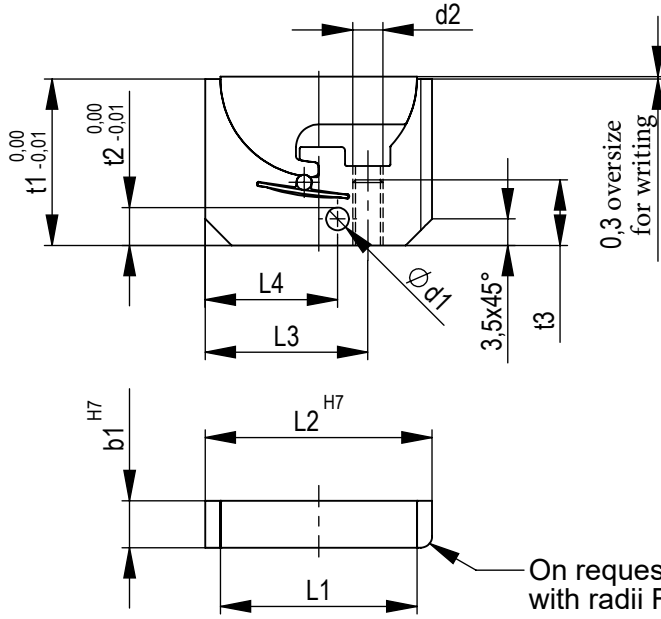


Labeling unit

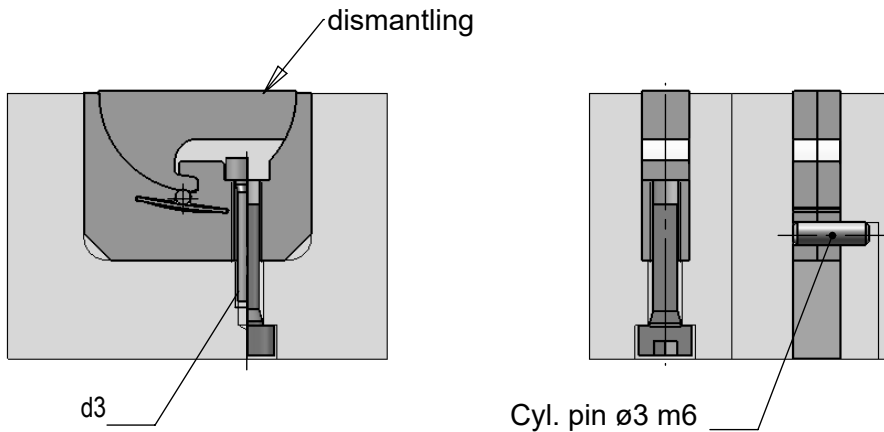


Mat. 1.2083 52+/-1 HRC

On request available with radii R0,2 + 0,01.

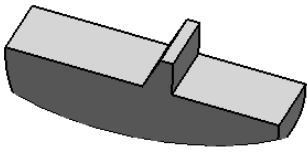


| d1 | b1 | L1 | L2 | L3 | L4 | d2 | d3 | t1 | t2 | t3 | Order no. | Order no. |
|----|------|----|----|------|------|----|----|----|----|----|------------------|------------------|
| 3 | 3,1 | 8 | 12 | - | 4,5 | - | - | 14 | 5 | - | WE8x3,1 | BE8x3,1 |
| 3 | 3,1 | 12 | 16 | - | 5,5 | - | - | 14 | 5 | - | WE12x3,1 | BE12x3,1 |
| 3 | 3,1 | 16 | 20 | - | 7,5 | - | - | 16 | 5 | - | WE16x3,1 | BE16x3,1 |
| 3 | 3,1 | 26 | 30 | - | 17,5 | - | - | 22 | 5 | - | WE26x3,1 | BE26x3,1 |
| 3 | 6,2 | 26 | 30 | 21,5 | - | M4 | M3 | 22 | - | 10 | WE26x6,2 | BE26x6,2 |
| - | 12,4 | 52 | 58 | 42 | - | M6 | M5 | 38 | - | 14 | WE52x12,4 | BE52x12,4 |

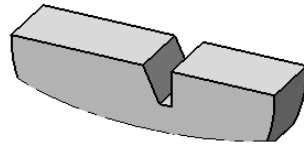


Do not place the injection point on the labeling unit

Labeling unit



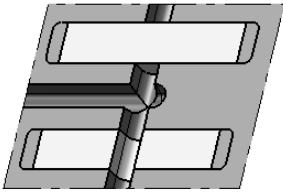
Contour raised



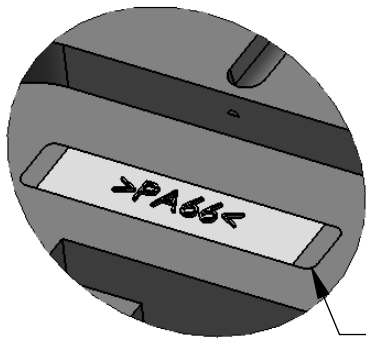
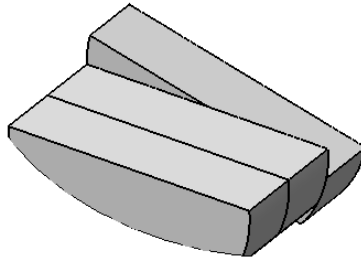
Contour deepened



Free-form surfaces



Open and block
the runner



Scripture raised

R1,5>



Field raised / font deepened

Labels:

Materials

>PA6 GF30<

Layer no.

3. Schicht 7/2009

Part no.
Customer no.

Nr. 090812W

Logo

zi-systeme.gmbh

Week
Year

KW38

2009
