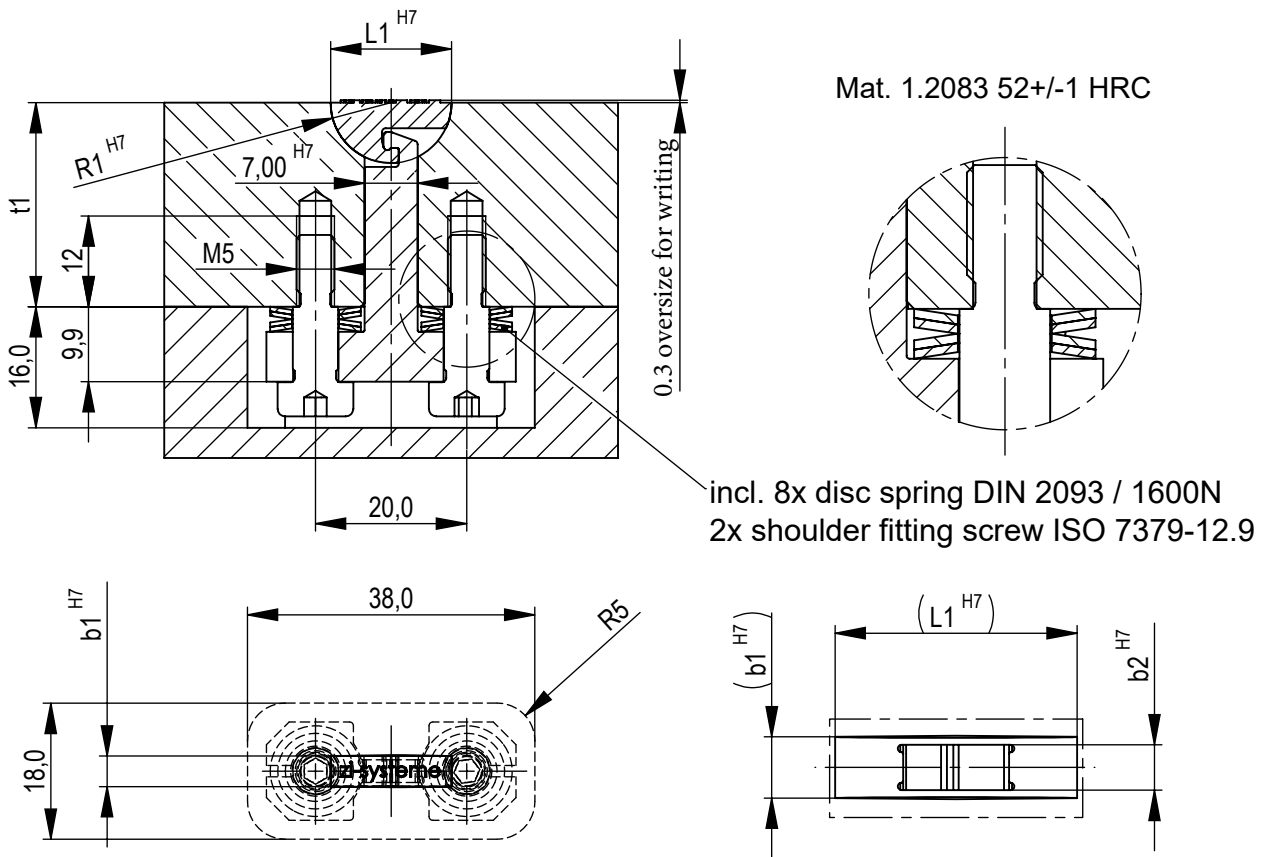
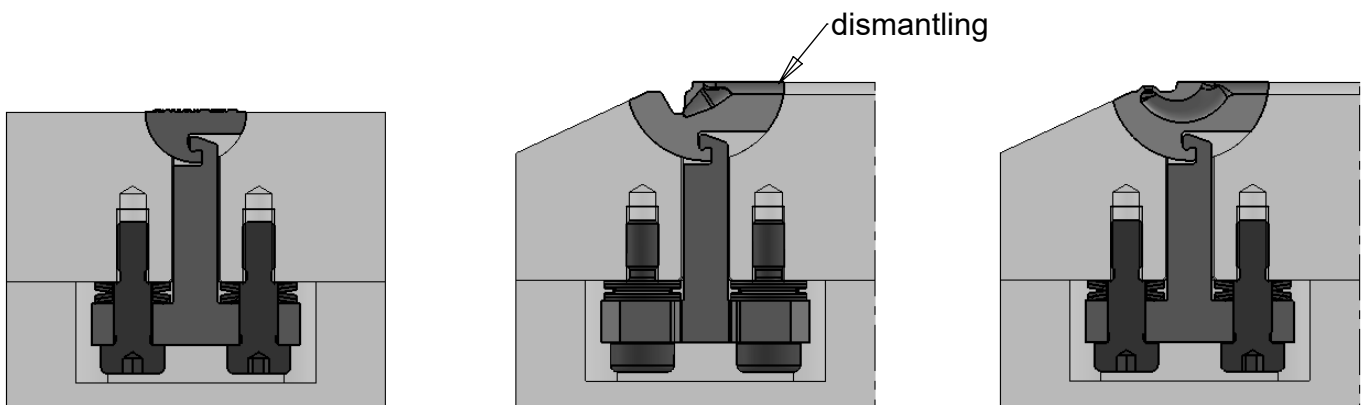


# Labeling unit with tension element



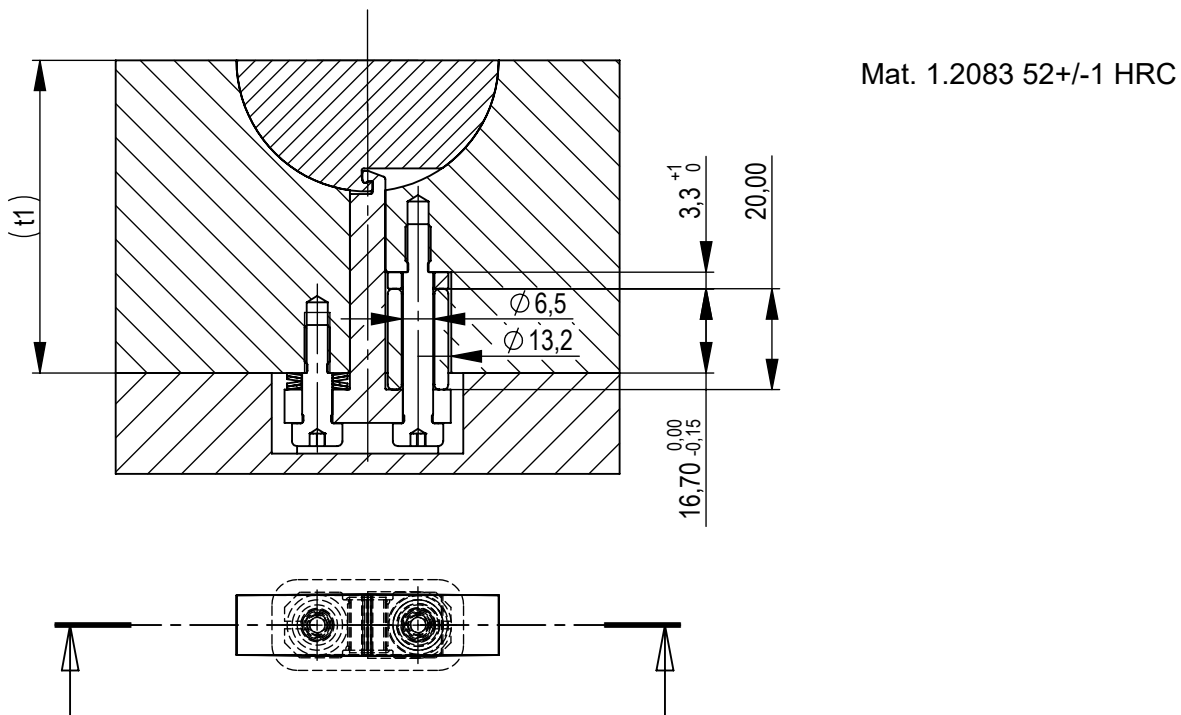
R1	b1	b2	L1	t1	Order No.	Order No.
8	3,1	3	16	27	<b>WEZ16x3,1</b>	<b>BE-ZUG03</b>
13	3,1	3	26	32	<b>WEZ26x3,1</b>	
13	6,2	3	26	32	<b>WEZ26x6,2</b>	
26	12,4	10	52	62	<b>WEZ52x12,4</b>	<b>BE-ZUG10</b>



Do not place the injection point on the labeling unit

Sidewall with conicity

Labeling unit with tension element / spring package



Additional spring packages

N	temperature	material	description	Order No.
1600 N	150°C	1.8159	8x disc spring	<b>TF1600N</b>
900 N	500°C	2.4668	8x disc spring	<b>TF500C</b>
190 N	250°C	1.4310	2x compression spring	<b>DF190N</b>
320 N	250°C	1.4310	2x compression spring	<b>DF320N</b>
440 N	250°C	1.4310	2x compression spring	<b>DF440N</b>
620 N	250°C	1.4310	2x compression spring	<b>DF620N</b>
300 N	500°C	2.4669	2x compression spring	<b>DF500C</b>
			2x shoulder fitting screw	<b>SPS6x30</b>

Springs can be adjusted with screws to the labeling unit with tension element, e.g

WEZ52x12,4      BE-ZUG10      DF500C      SPS6x30