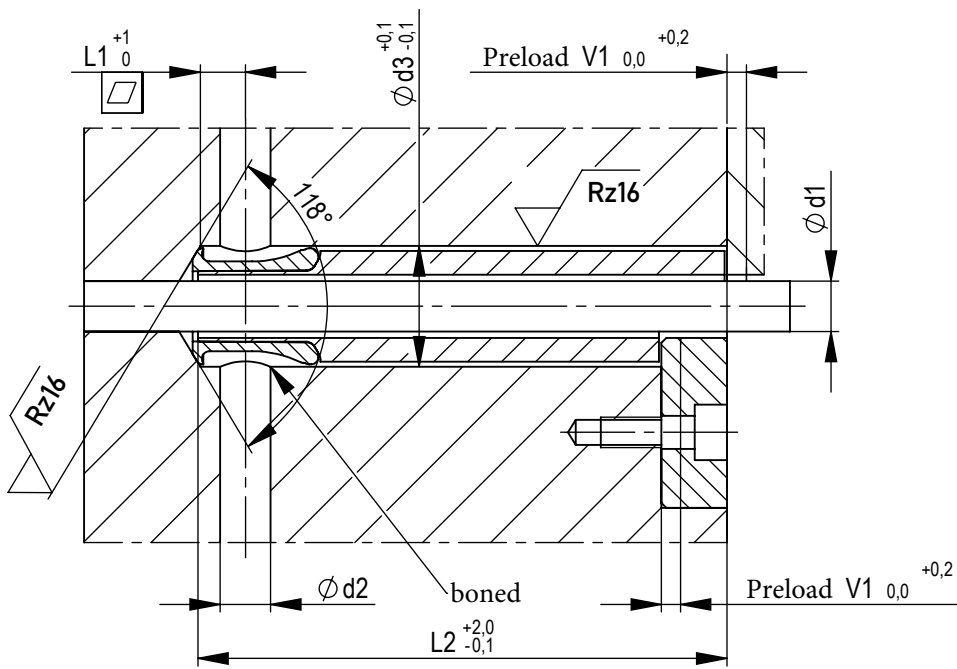


Idler pulley

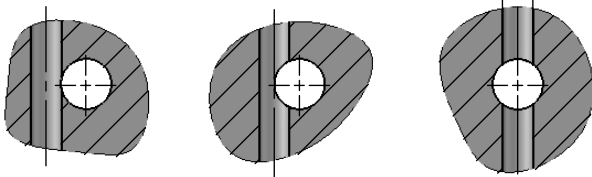


Material: Viton/ cutting steel	
Medium	max. C°
Luft/air	200
Öl/oil	150
Wasser/water	95

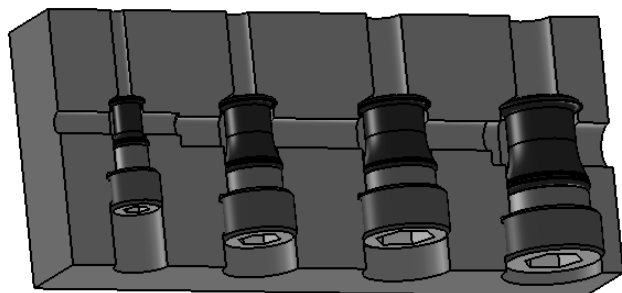
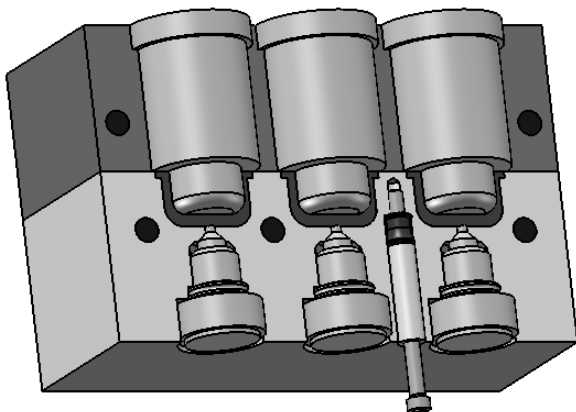
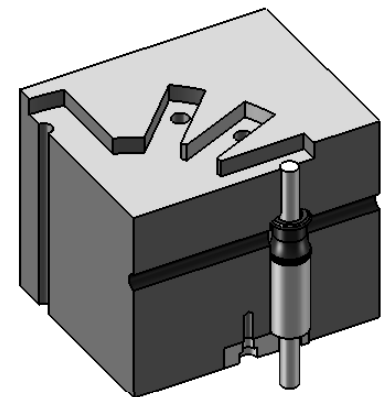
up to 10 bar

d1	d2	d3	L1	L2	V1	Order No.	Order No.
0-4	ø4-ø6	ø9,5	5	100	1	UR-SR4	UR4
0-6,5	ø6-ø10	ø15,5	8	100	1	UR-SR6,5	UR6,5
0-10,5	ø6-ø10	ø20	8	120	1	UR-SR10,5	UR10,5
0-12	ø8-ø12	ø22,5	11	150	1	UR-SR12	UR12

The axial displacement does not affect the sealing edges

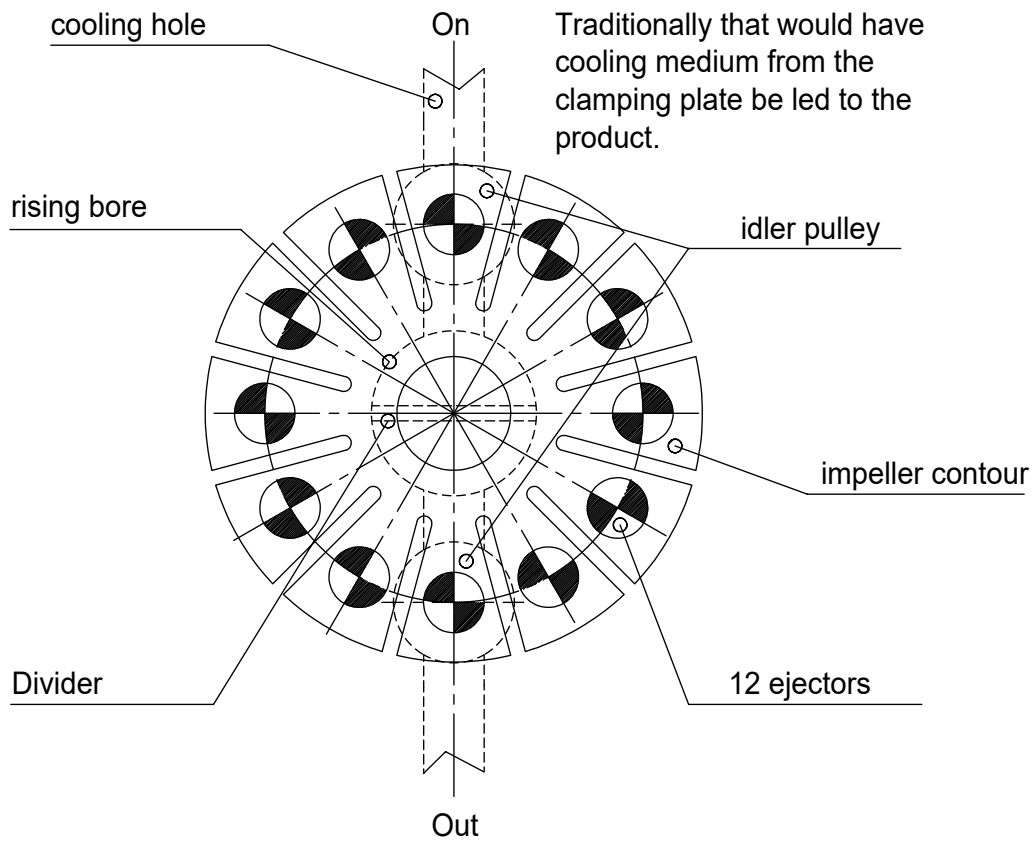


Flow rate = $\phi d2$



Idler pulley

Cooling directly on the product:



Optimally placed cooling and screw connection:

