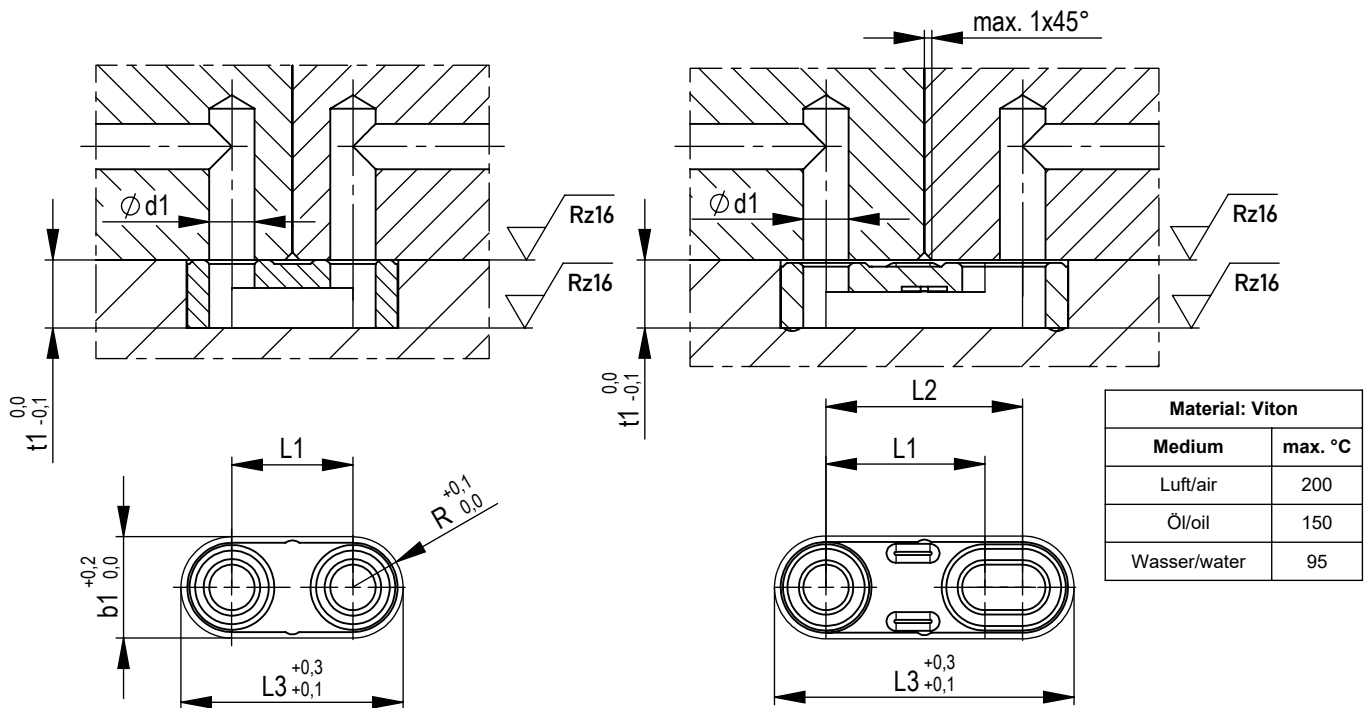


Deflector

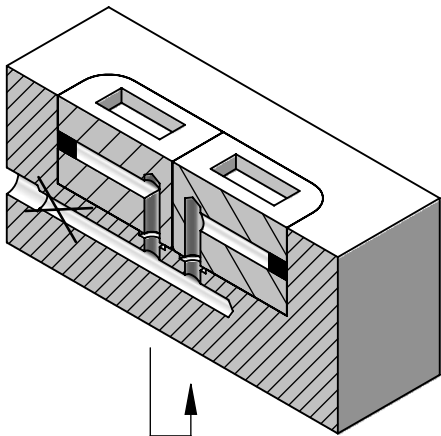


d	L1	L2	L3	b1	t1	Order No.
6	16		28	12	9	UM6x16
8	18		32	14	11	UM8x18
10	20		36	16	12	UM10x20
12	22		40	18	15	UM12x22

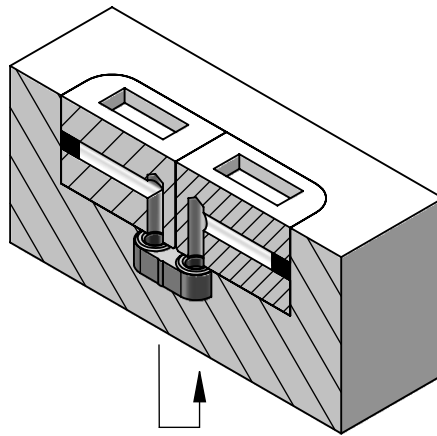


d	L1	L2	L3	b1	t1	Order No.
6	21	26	38	12	9	UML6x16x26
8	26	30	44	14	11	UML8x26x30
10	28	34	50	16	12	UML10x28x34
12	32	38	56	18	15	UML12x32x38

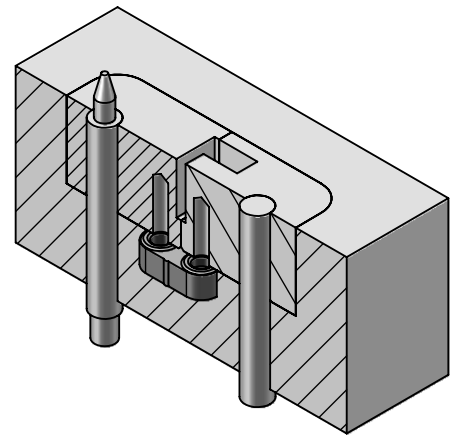
Deflector



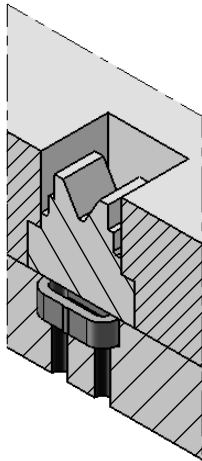
conventional



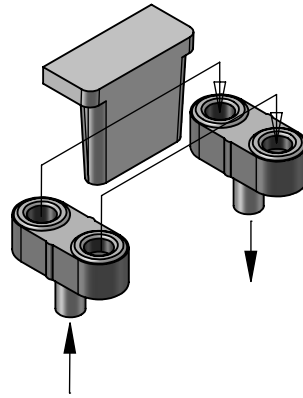
Detours and problematic
Auxiliary bores are not needed



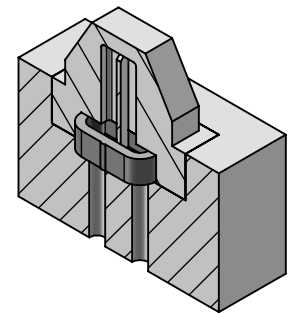
Redirecting too between
Obstacles possible



optimal temperature control
of smallest mold inserts



cool from ribs



Partition only in use

